





What's so
special about
Oregon White
Oak?

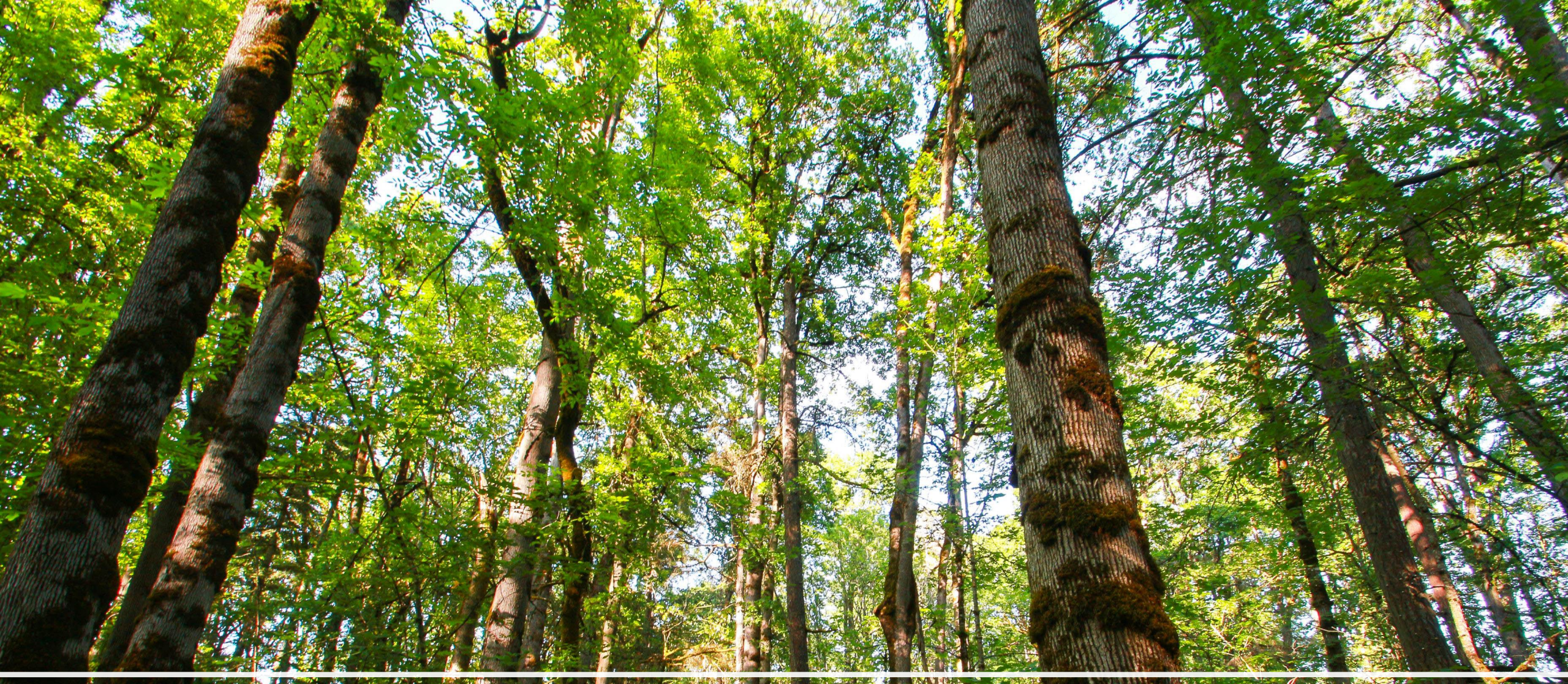


Westlake HOA





Problems Identified



Oak Canopy inhibited by Oregon Ash

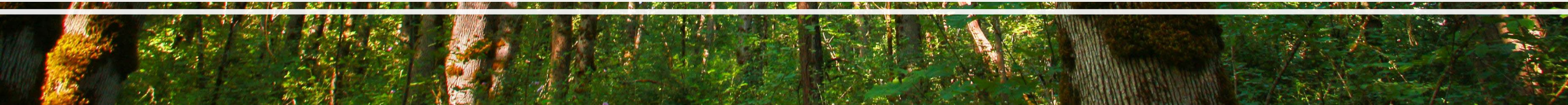


Table 2. Definitions of four oak habitat types as described by Altman and Stephens (2012).

Metrics	Oak Savanna	Oak Woodland (open)	Oak Woodland (closed)	Oak Forest
Oaks/ acre	1-10	5-10 large or 10-20 younger	10-30 large or 20-40 younger	> 30 large or > 40 younger
% Canopy cover	< 25%	25-50%	50-75%	> 75%
Understory	Herbaceous prairie; few to no shrubs	< 30% shrubs	< 30% shrubs, but may have areas of dense woody vegetation	Depends on soil, but may be densely vegetated with woody vegetation

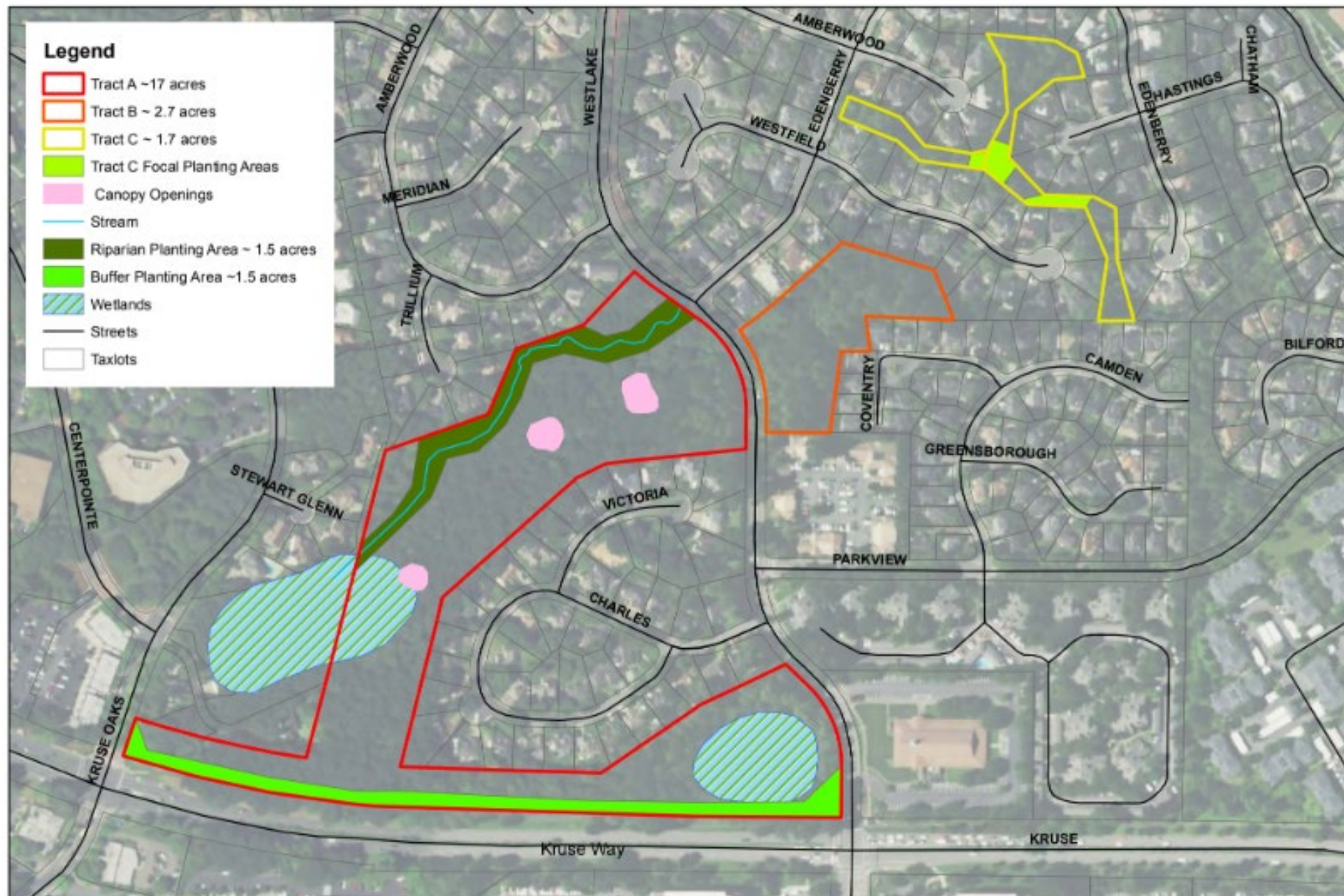


Figure 3. Westlake HOA Open Space
Desired Future Conditions and Planting Areas



Desired Future Condition

Across the site the dominant overstory species is Oregon white oak with some canopy openings; the ground is dominated by a native herbaceous layer; a small forested wetland is managed for its unique assemblage of plants; and dense native shrubs buffer the edges and corridors.

How do we get there?



Healthy ecological systems

- Soil
- Stormwater
- Shade
- Habitat
- Nutrient Cycling
- Aesthetic and Cultural value
- Nesting opportunities for threatened species
- Create conditions for oaks to mature





























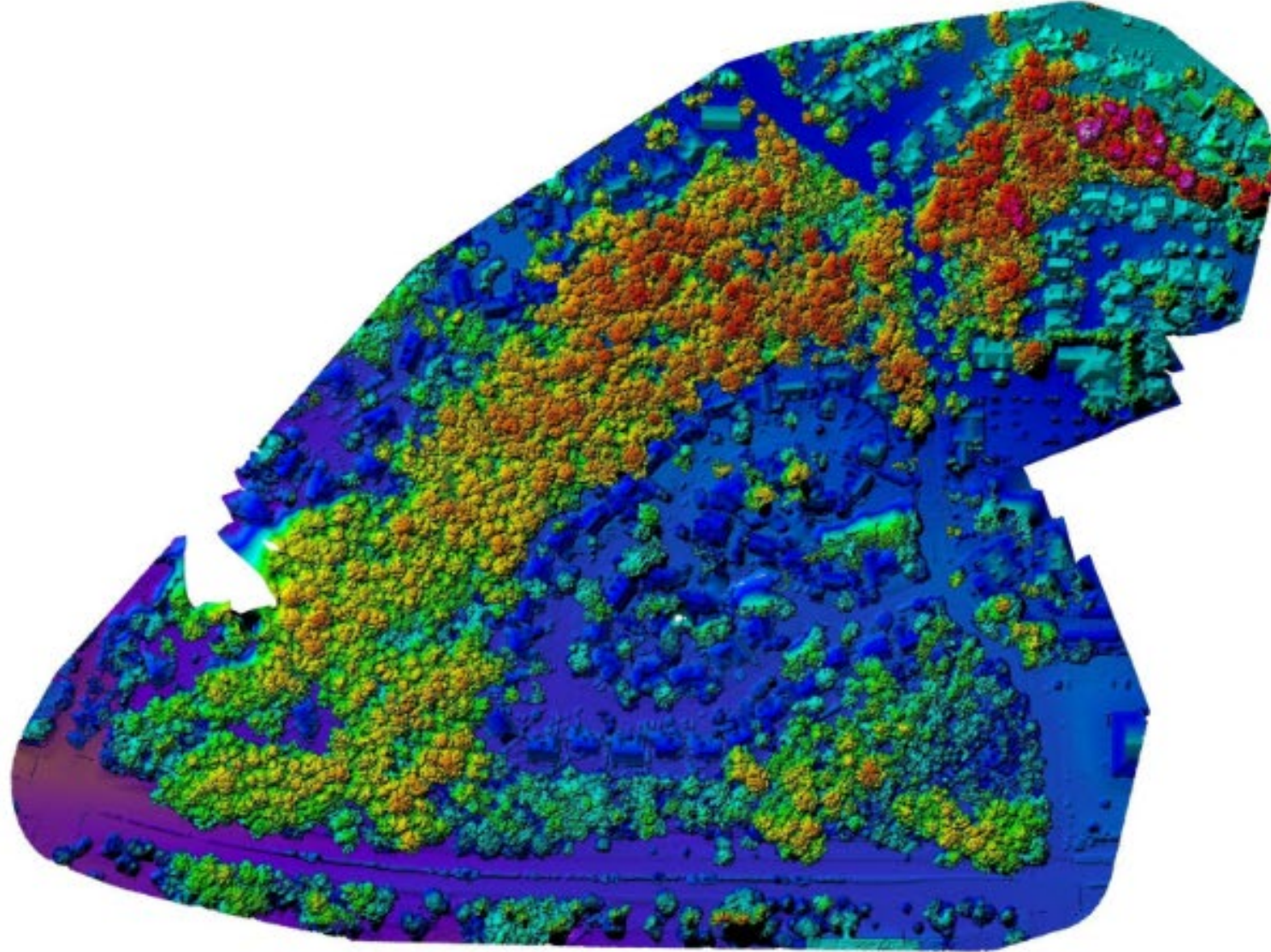








are the right can be conducted over time, and compared to the baseline data.



This is a compressed, colored, digital elevation model (DEM). The colors represent elevations. Elevation data can be used to do a "watershed" style analysis on a canopy to aid in delineation of individual trees in GIS.









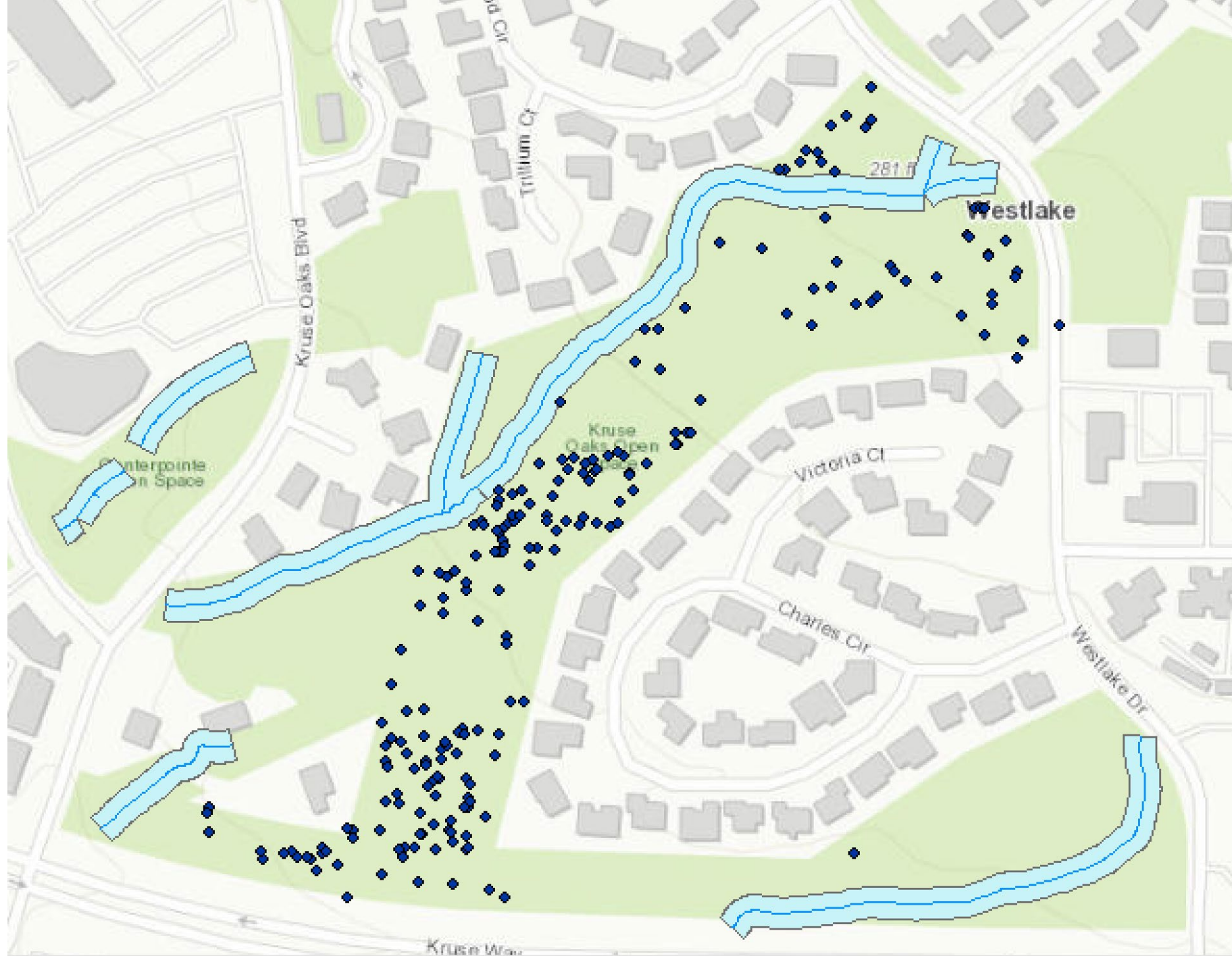








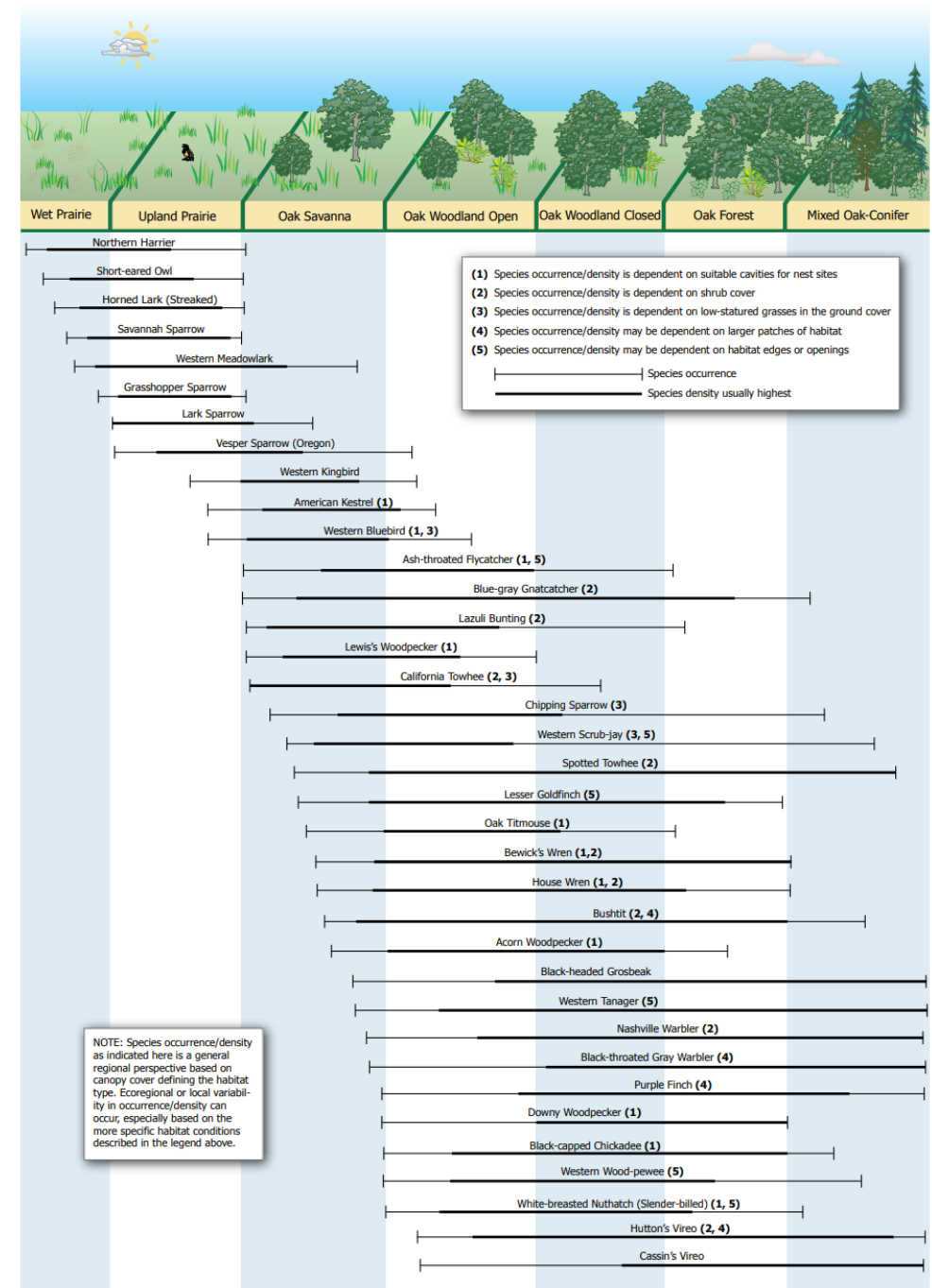




Table 1. Summary of breeding season habitat relationships of oak-associated bird species in the Pacific Northwest

	Primary Structural Layer ¹					
Species (Subspecies)	Canopy/ Sub-canopy	Shrub/ Midstory	Ground/ Shrub	Cavity Nester	Edges ²	Patch Size ³
Obligate or Near-Obligate						
Acorn Woodpecker	X			X		
Ash-throated Flycatcher	X			X	X	
Blue-gray Gnatcatcher		X				
California Towhee			X			
Oak Titmouse	X			X		
White-breasted Nuthatch	X			X	X	
Highly Associated						
Bewick's Wren		X		X		
Black-capped Chickadee	X			X		
Black-headed Grosbeak	X					
Black-throated Gray Warbler	X					X
Bushtit		X				X
Cassin's Vireo	X					
Chipping Sparrow			X			
Downy Woodpecker	X			X		
House Wren		X		X		
Hutton's Vireo		X				X
Lazuli Bunting			X			
Lesser Goldfinch					X	
Lewis's Woodpecker	X			X		
Nashville Warbler		X				
Purple Finch	X					X
Spotted Towhee			X			
Western Bluebird			X	X		
Western Scrub-jay					X	
Western Tanager	X				X	
Western Wood-pewee	X				X	
Oak Savannah/Grassland Associates						
American Kestrel				X		
Lark Sparrow			X			
Vesper Sparrow			X			
Western Kingbird	X					
Western Meadowlark			X			

Figure 2. Degree of Occurrence of Bird Species Across the Gradient of Prairie-Oak Habitat Types













690

OBSERVATIONS

162

SPECIES




Places of Interest

Redo search in map

TAXONOMIC GROUPS

 Amphibians, Birds, Ray-Finned Fishes, Mammals, Reptiles, Other Animals

 Mollusks, Arachnids, Insects

 Plants

 Fungi

 Chromista

 Protozoans

 Unknown









-
- 2500 native plants installed
 - 5000 feet of streambank restored
 - Over 1500 volunteer hours

