



# City of Lake Oswego Urban & Community Forestry Plan

URBAN FOREST SUMMIT  
NOVEMBER 2, 2024

1

## Presentation Overview

- 01** What is an urban forest and its benefits?
- 02** Background and overview of the UCFP
- 03** Role of community in supporting a healthy urban forest
- 04** Table discussions
- 05** Q & A

2



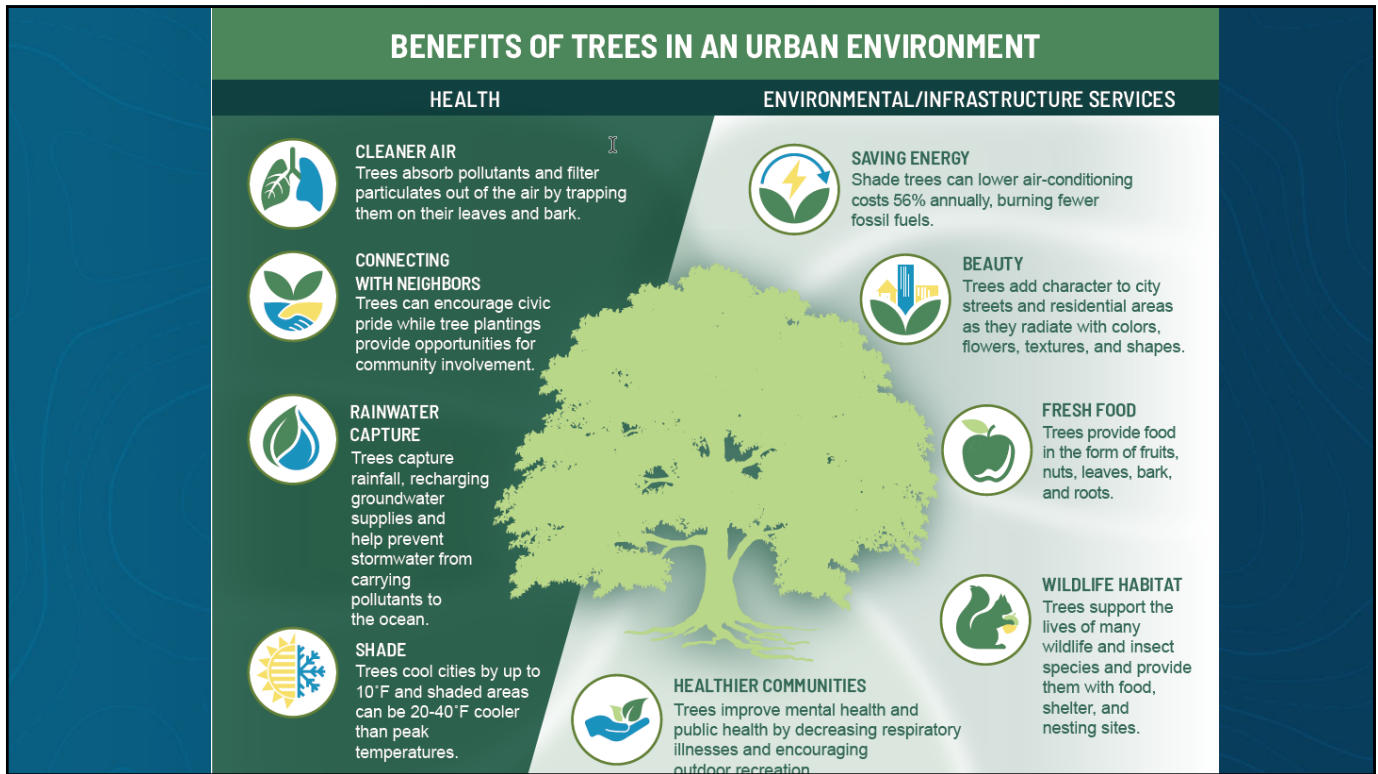


3



4





5



6





7



8



## What is the UCFP?

- A guiding document that establishes how the City will manage its trees based on the needs of Lake Oswego
- A roadmap for managing Lake Oswego's trees to achieve a shared vision for short-, medium-, and long-term actions
- Adaptive document that will evolve with future conditions



9

## Developing the UCFP

### Review policies and practices

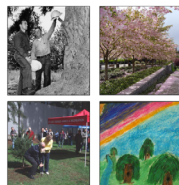
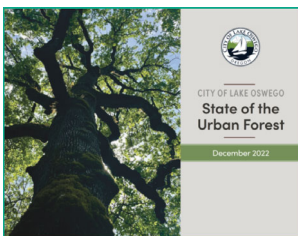
Review tree policies, practices, and programs to ensure they are working as intended

### Community input

Engage staff and residents to understand values, priorities, and needs for the urban forest

### Set goals and monitor progress

Set goals for the City's tree programs and strategies and action steps for how to get there



Lake Oswego  
Urban & Community Forestry Plan  
City of Lake Oswego | December 2007



10

10



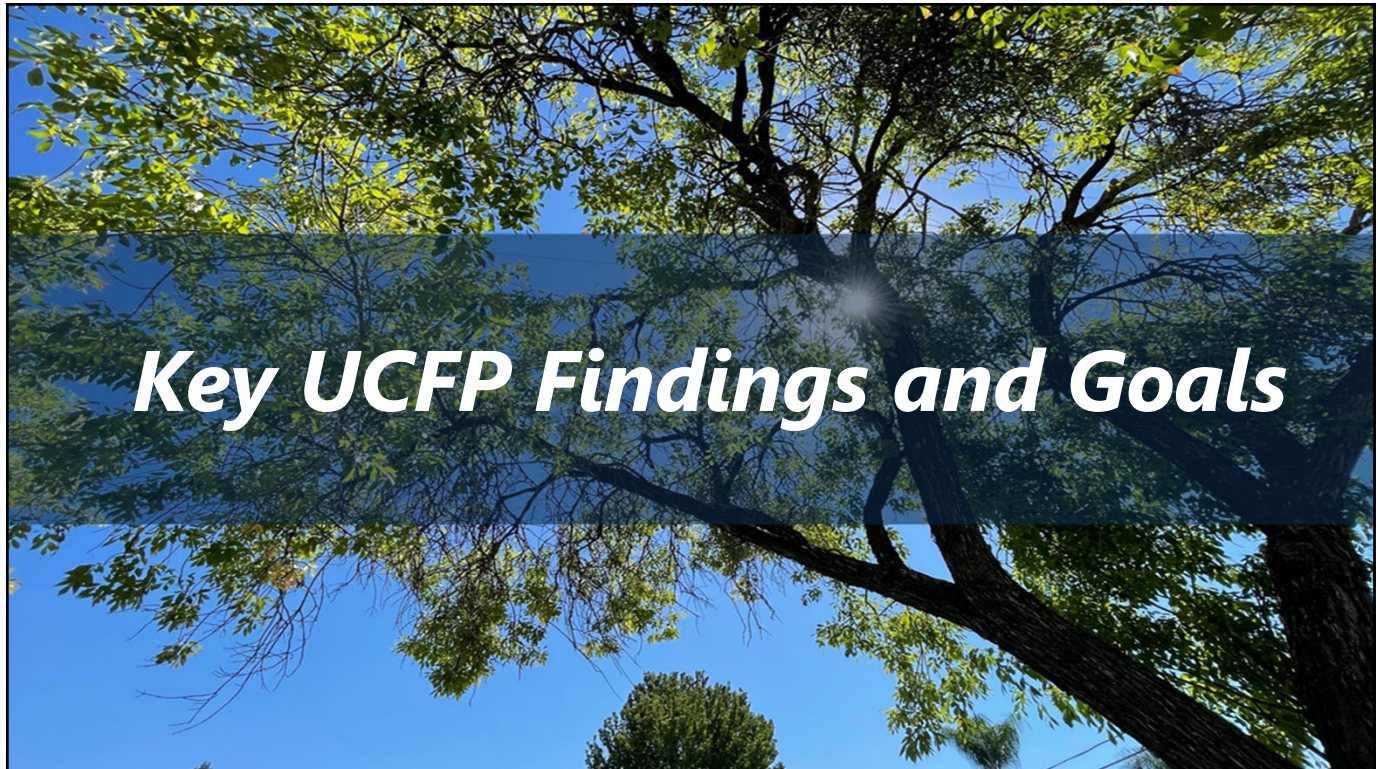
## Community and Interested Party Engagement

- 2 outreach events and an online survey
- 6 Technical Advisory Committee meetings
- 2 Boards & Commissions work sessions
- 9 sessions with focus groups
- A kick-off meeting and 2 work sessions with City Council



11

## ***Key UCFP Findings and Goals***



12





## VISION STATEMENT

---

Lake Oswego's urban forest is a sustainable ecosystem that harmoniously balances nature and urban life, is resilient to and combats the effects of climate change, and is managed as an essential environmental, economic, and cultural asset that contributes to the health and happiness of all members of our community.

13

## Key Findings

Key Finding
1. The City needs an updated public tree inventory to make informed urban forest management decisions.
2. The City's tree management responsibilities must be clarified
3. Portions of the City's Tree Code lack clear and objective standards
4. The City has a dense canopy and should prioritize canopy management and maintenance rather than continued and perpetual expansion
5. Climate change effects on Lake Oswego's Urban Forest

14



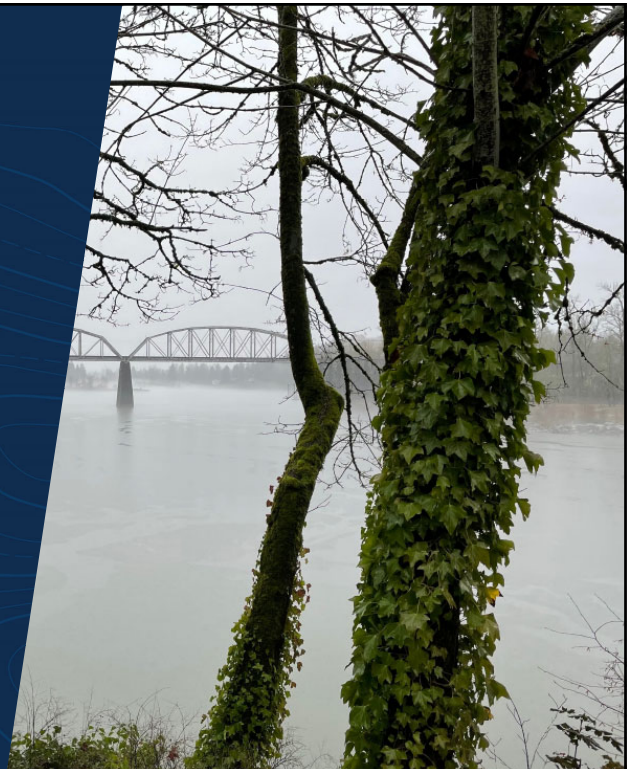
## Key Findings

Key Finding
6. Invasive pest and plant management
7. Most of the city-wide tree canopy cover is located on private property and non-city owned or managed public property
8. Threats to the short- and long-term health and sustainability of Lake Oswego's urban forest are not well-understood by the public and more transparency in tree removal permit data is needed
9. The Lake Oswego community is active, engaged, and strongly values protection of the City's natural resources.

15

## Components of the UCFP

- Urban forest Sustainability
  - Sustainability indicators
  - Recommended inventory frequency
- *Urban Forest Management*
  - *Management responsibilities*
  - *Industry BMPs*
  - *Funding, staffing, and contractors*
- *Urban Forest Codes, Plans, and Policies*
  - *Review of Municipal Code*
  - *Review of City and Community Plans*



16



## Strategic Plan

- *5 Guiding Principles*
  - *A sufficiently funded urban forest*
  - *A managed living asset*
  - *An enhanced quality of life for all in Lake Oswego*
  - *A resilient urban forest that is postured to adapt to climate change*
  - *An urban forest that integrates with the urban needs of a city to include housing, infrastructure, businesses, schools, and transportation*

### Guiding Principle 1 | A Sufficiently Funded Urban Forest

Action Number	Action	Time Frame *
<b>Strategy:</b> The urban forest is cared for through sufficient financial investment and adequate staffing resources		
1a	Develop a budget proposal for consideration during the next regular budget cycle, based on the findings from the Urban and Community Forestry Plan (UCFP).	Short term
1b	Pursue Oregon Department of Agriculture (ODA) and Oregon Department of Forestry (ODF) grant funding to conduct a tree inventory, create a wood reuse program, and prepare a pest action plan.	Short term
1c	Pursue tree planting opportunities through community volunteer events or collaborating with local organizations to reduce the cost of tree planting.	Ongoing
1d	Develop a strategy to increase tree management funds because as the City's trees age they will require increased maintenance costs, and the looming arrival of invasive pests such as emerald ash borer ( <i>Agrilus planipennis</i> ) and Mediterranean oak borer ( <i>Xyleborus monographus</i> ) will require costly removal or treatment programs.	Medium term
1e	Increase tree planting budgets to reflect tree planting goals for existing City plans and documents.	Ongoing

17

## Implementation Plan

- *Action items from the Strategic Plan categorized into ongoing, short-, medium-, and long-term buckets*
- *Recommended department(s) for leading efforts and their estimated costs*
- *Each category's action items are listed by highest to lowest priority*

### IMPLEMENTATION PLAN

The Implementation Plan assigns all Strategic Plan actions a timeline, responsible party and or department(s), recommended partners, and the estimated budget to accomplish the work.

#### ONGOING ACTIONS

Action No.	Action	Responsible Party	Recommended Partner(s)	Cost
5i	Strive to ensure tree planting exceeds tree removal performed by all City departments each year.	Parks, PW	Planning	\$\$
3f	Create a State of the Urban Forest report in conjunction with, or subsequent to, the effective shade analysis, which is generally completed within a year of when new LIDAR data becomes available to align with the availability of regional lidar data and the City's effective shade/canopy cover analysis, resulting in consistent measurement of the urban canopy. Communicate the findings to the community along with the importance of tree canopy and effective shade in lowering or stabilizing stream temperatures.	Planning	Parks, PW, GIS	\$\$\$\$
1e	Increase tree planting budgets to reflect tree planting goals for existing City plans and documents.	City	Parks, PW	\$\$\$\$

18



## Monitoring Plan

- Goal setting tool to measure urban forest progress
- 28 question assessment to be taken every two years
- Provides a consistent, quantifiable metrics to meet

FINAL SCORECARD			
COMMUNITY ASSESSMENT & GOAL-SETTING		TOTAL CURRENT	TOTAL GOAL
		60	109
		SCORE GAP	
		49	
Section	Current	Goal	
Measure Your Current Tree Canopy and Set Goals	4	4	
Urban Forest Inventory and Assessment	5	8	
Know What's Happening to Trees in Your Community	9	12	
Urban Forest Characteristics	3	8	
Engaging Peers and Residents in Process	11	16	
Creating Essential, Effective Public/Private Partnerships	7	11	
Resource Management: Planning	3	12	
Resource Management: Implementation	13	24	
Resource Management: Monitoring and Maintenance	5	14	

19



20



## Implementation Plan: On-going Actions Currently Implemented

- Strive to ensure City tree planting exceeds tree removal
- Implement scouting program for invasive beetles
- Collaborate with OLWC to train residents collecting tree inventory data
- Conduct tree workshops
- Maintain TCUSA status
- Implement Heritage Tree Program
- Maintain tree educational materials

21

## Implementation Plan: On-going Actions Requiring Additional Resources

- Increase tree planting and HEP budgets
- Treat tree debris from storms and pests before using for mulch
- Update SOTUF Report on a cycle
- Update 2007 city tree inventory



22



## Implementation Plan: Short-Term Actions Requiring Additional Resources

- Complete comprehensive inventories of trees on city-owned & managed property
- Standardize tree establishment care requirements for all city depts.
- Update the Tree Code to comply with state law and in accordance with UCFP recommendations



23

## Implementation Plan: Med-Term Actions Requiring Additional Resources

- Conduct a hazardous tree inventory along public streets and trails
- Create a tree risk management program
- Develop a tree replacement program for targeted ROWs
- Implement a structural pruning program for young trees in parks
- As part of city's budget process, consider funding an urban forester
- Establish an urban forestry internship program
- Create a tree debris utilization program
- Establish soil volume standards for street trees and parking lot plantings

24

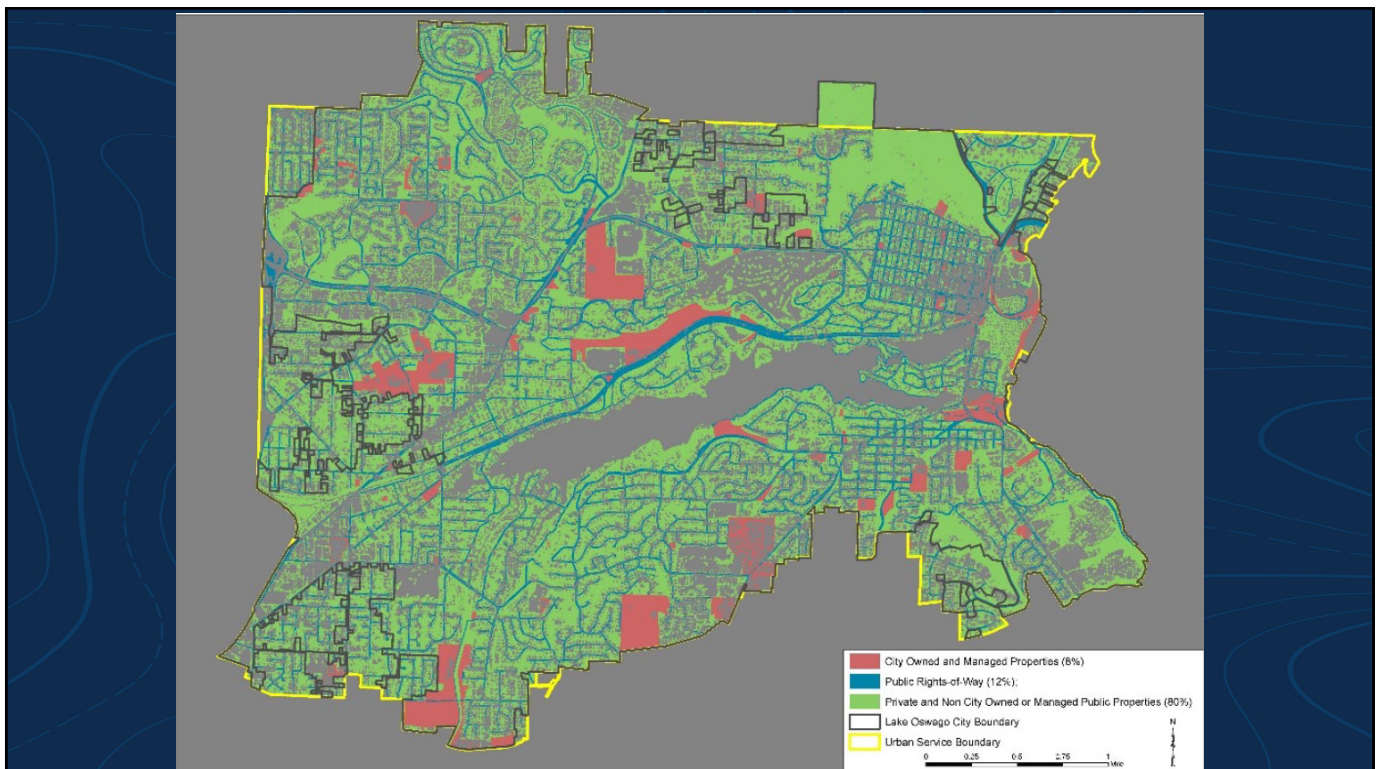


## Implementation Plan: Long-Term Actions Requiring Additional Resource

- Establish a pruning cycle goal of 5-7 years for all city-managed street trees



25



26



27

## TABLE DISCUSSIONS

- Q1 - What part of the Urban and Community Forest Plan is most important or resonates with you?
- Q2 - What questions do you have for Jessica and Scott? Table Leaders will gather questions for the Q&A.

29