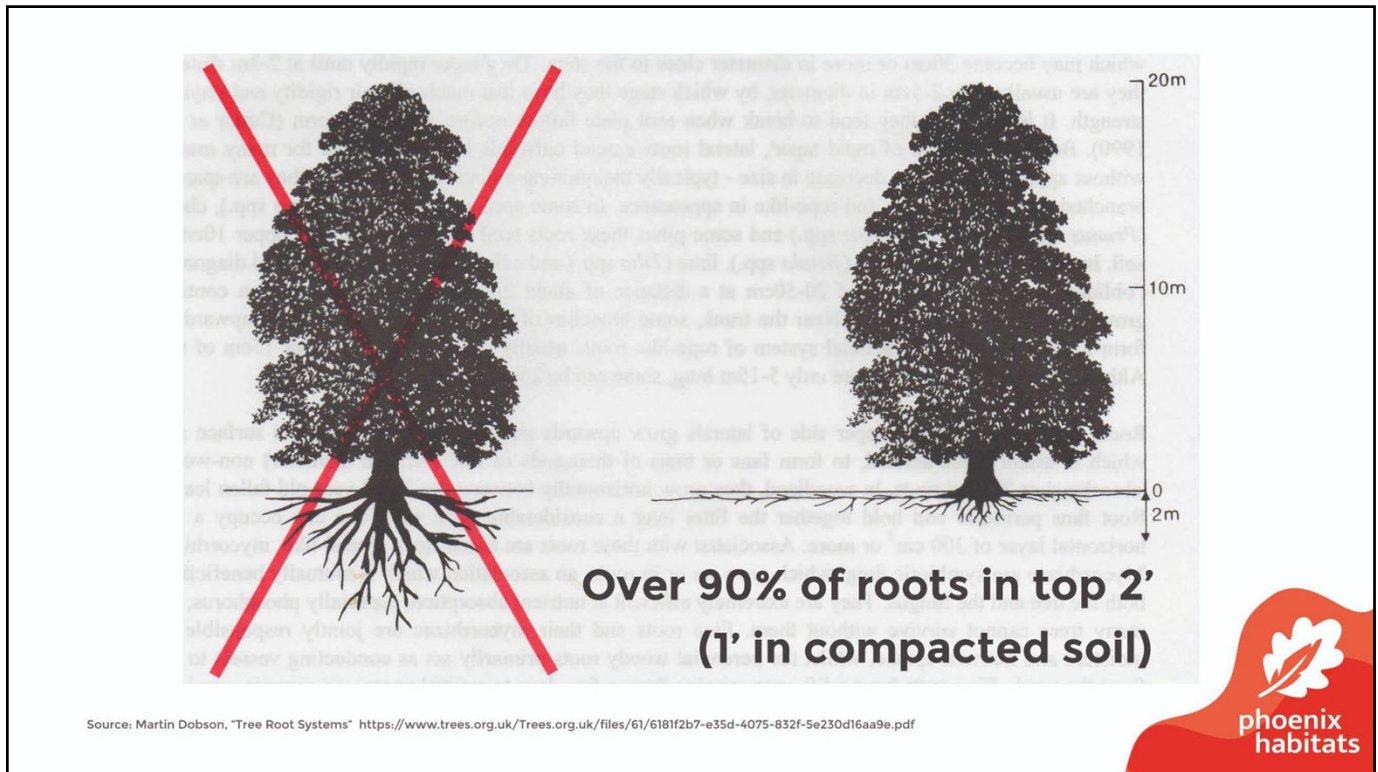


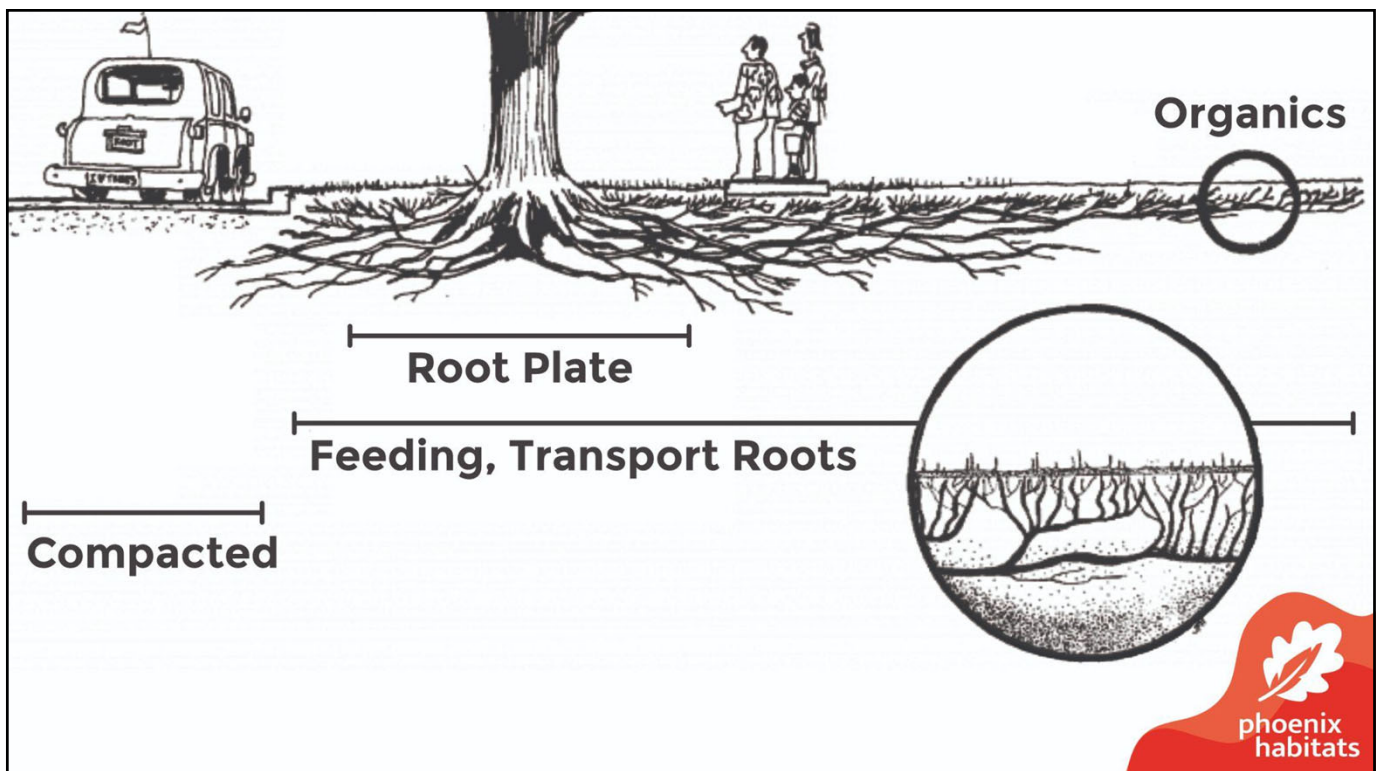
10



11



12



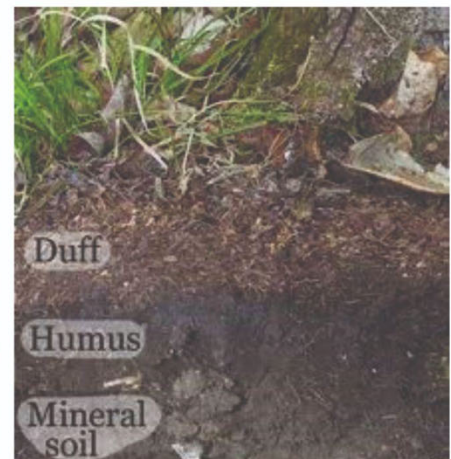
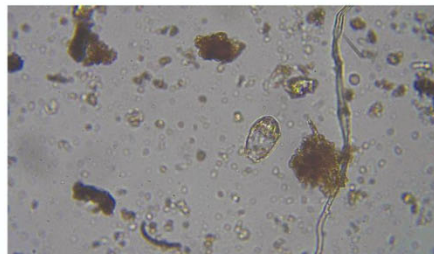
13



14

Soil Biology

- **Oxygen**
- **Moisture**
- **Nutrients**
(plant debris,
wildlife,
minerals,
plant exudates)



15

Topsoil Degradation from Management

- **Compaction from activity**
- **Removing leaves**
- **Keeping soil bare (unplanted)**
- **Herbicide & Gas Tools**
- **Erosion, total loss of topsoil**



16

Topsoil Degradation from Climate Instability

- **Drought, soil desertification**
- **Flash flooding in heavy rain events**
- **Topsoil erosion**
- **Tree loss**
- **(heat & exposure, further erosion, carbon loss)**



17

Become Root Farmers & Soil Builders

- **Decompact**
- **Amend**
- **Site features: topography, boulders & logs**
- **Capture water**
- **Full, Diverse Planting**
- **Electric tools**

